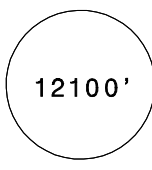
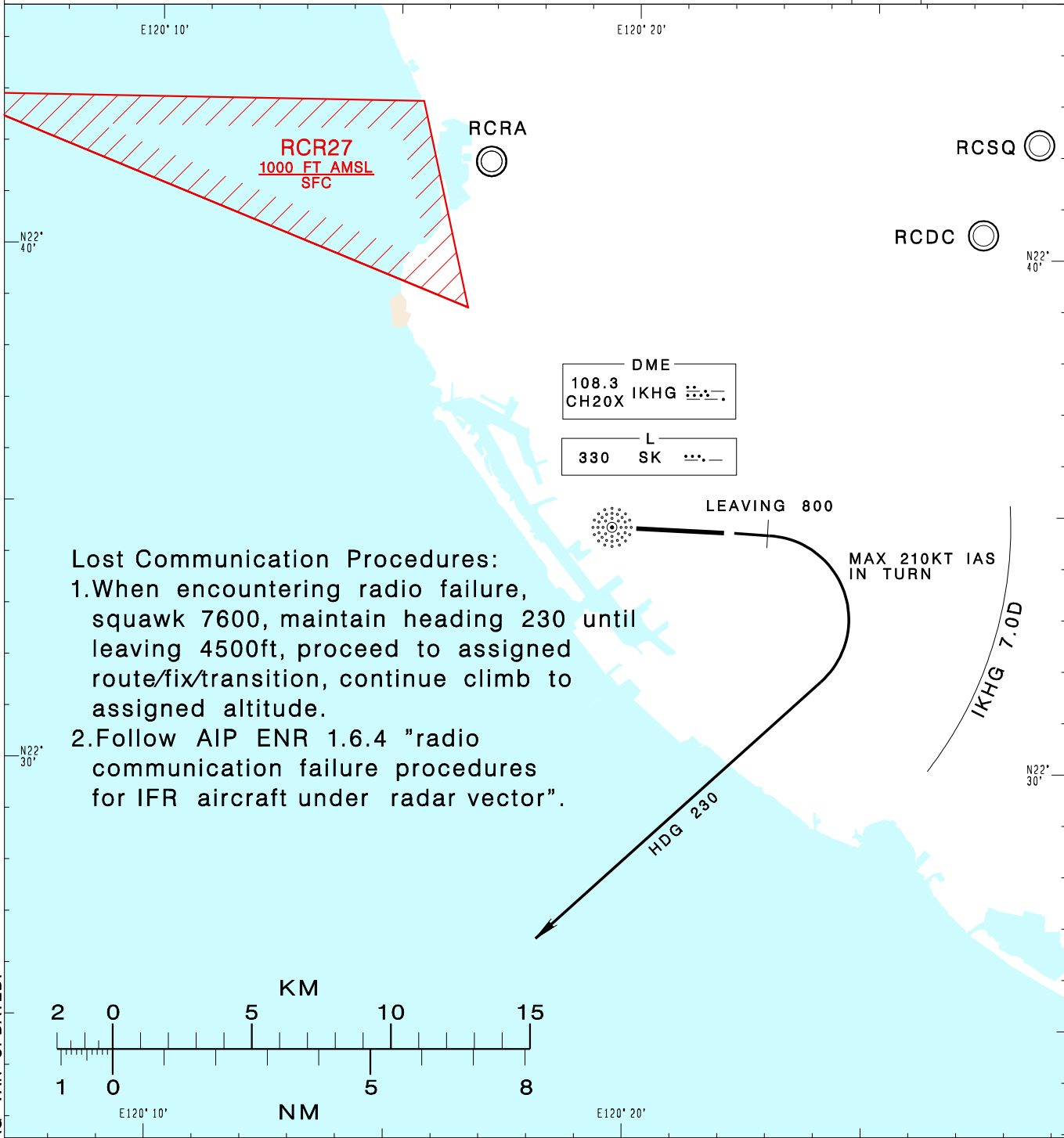


高雄國際機場
KAOHSIUNG INTL AD

RCKH SID
SPRAY 1L RADAR(RWY09)

KAOHSIUNG APP 124.7 125.7	KAOHSIUNG TWR 118.7 120.7	ATIS 127.8	VAR 4° W-2023		
Apt Elev: 32'		Trans Level: FL130			Trans Alt: 11,000'
BEARINGS ARE MAGNETIC; DISTANCES ARE NAUTICAL MILES; ELEVATIONS, HEIGHTS IN FEET					



Lost Communication Procedures:

1. When encountering radio failure, squawk 7600, maintain heading 230 until leaving 4500ft, proceed to assigned route/fix/transition, continue climb to assigned altitude.
2. Follow AIP ENR 1.6.4 "radio communication failure procedures for IFR aircraft under radar vector".

CHANGES: MSA AND MAG VAR UPDATED.

SPRAY ONE LIMA RADAR DEPARTURE
Climb on RWY HDG until leaving 800ft, then turn right HDG 230, complete the turn within 7.0D from IKHG, climb to ATC assigned altitude for radar vectoring.

NOTE

1. Minimum climb gradient required: 6%(365ft/NM) until 2,000ft.
2. Caution: pier cranes, terrain and stacks east, west and south of the airport.
3. ATS surveillance required.